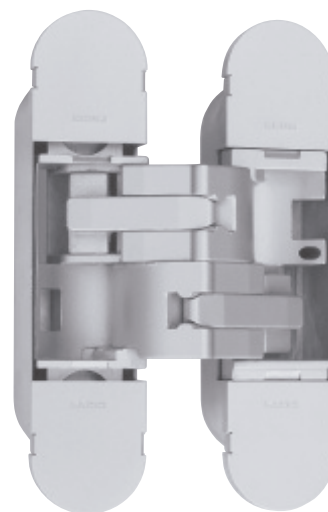




## ALFA 32 BISAGRAS

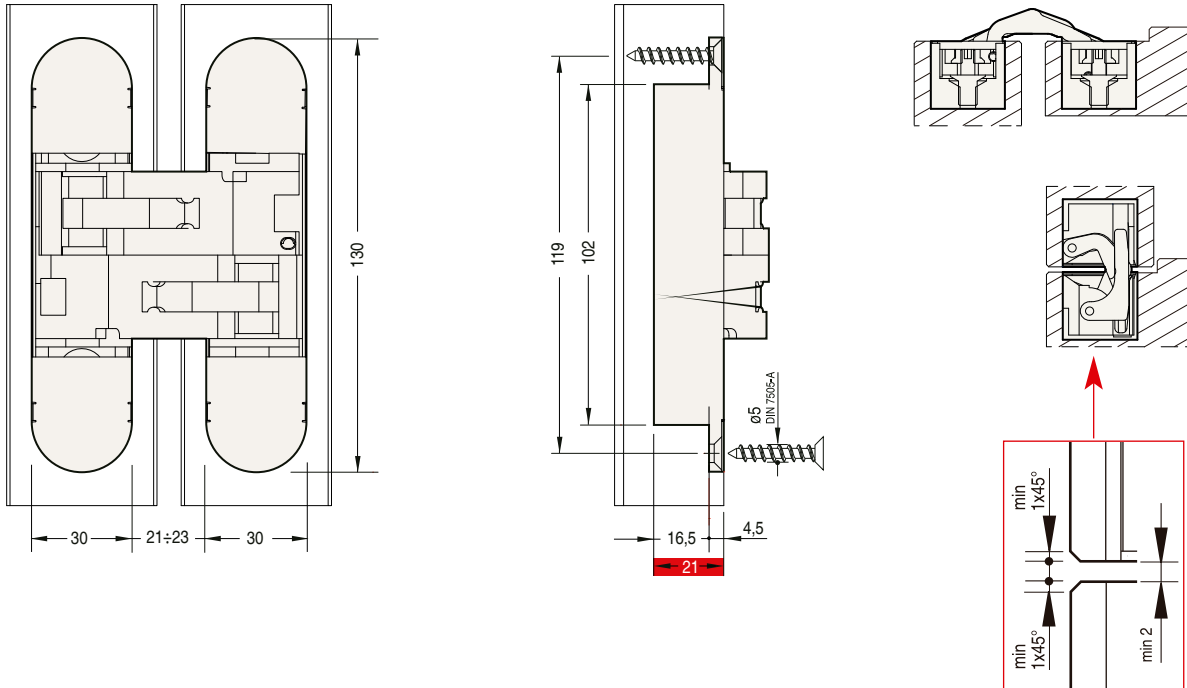
ALFA 30 es una bisagra para puertas de un máximo de 70 kg. de peso. Cuenta con sistema 3D para poder regularla en sus 3 ejes. Este modelo de la familia ALFA está indicado para puertas donde necesitamos más distancia entre la hoja y el zócalo.

ALFA 32			
CÓDIGO	ACABADO		
BI01132AL	Aluminio	180°	6
BI01132NI	Niquel	180°	6
BI01132OR	Oro	180°	6

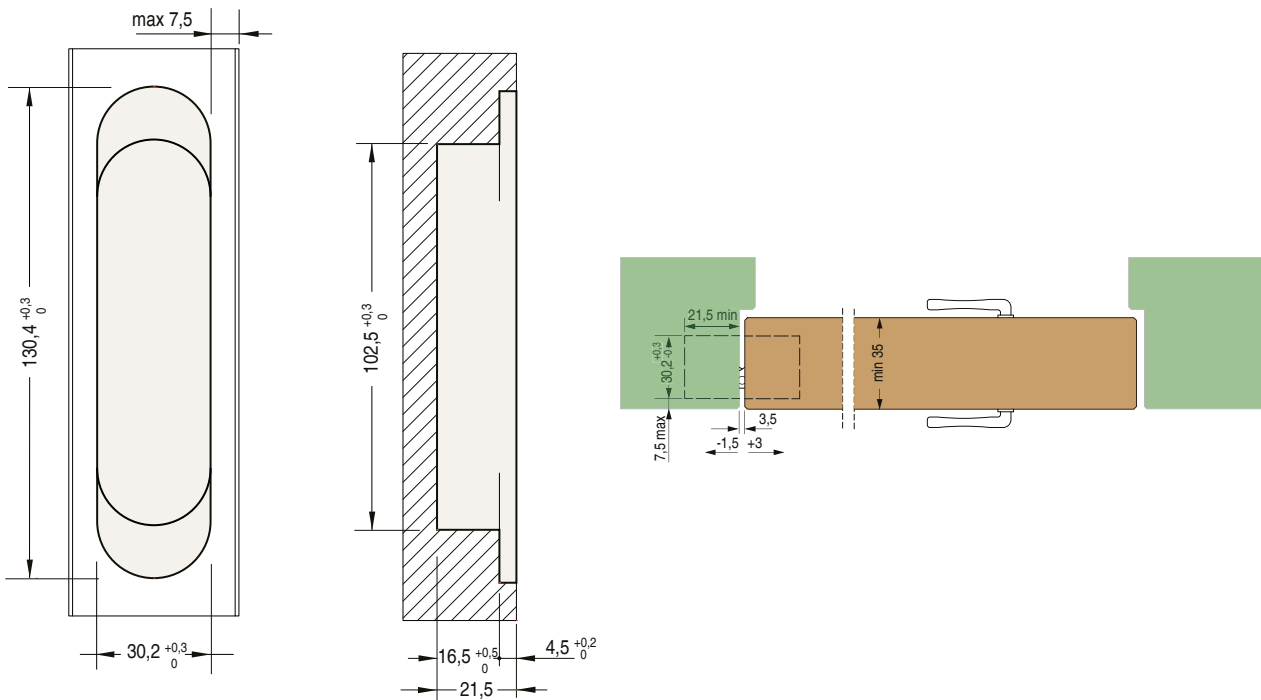


Apertura 180°

Planos



Medidas

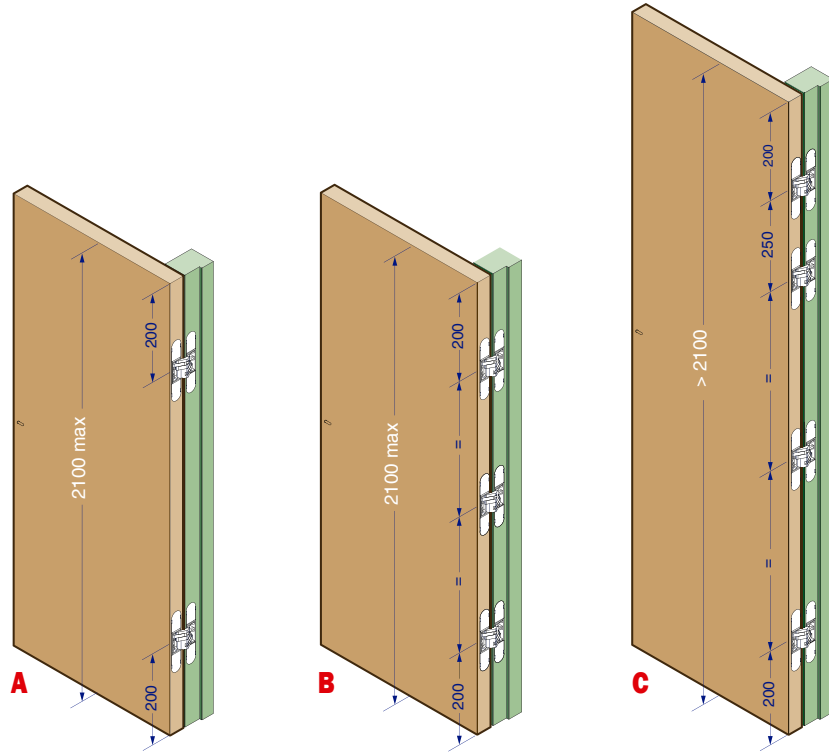


Flujo

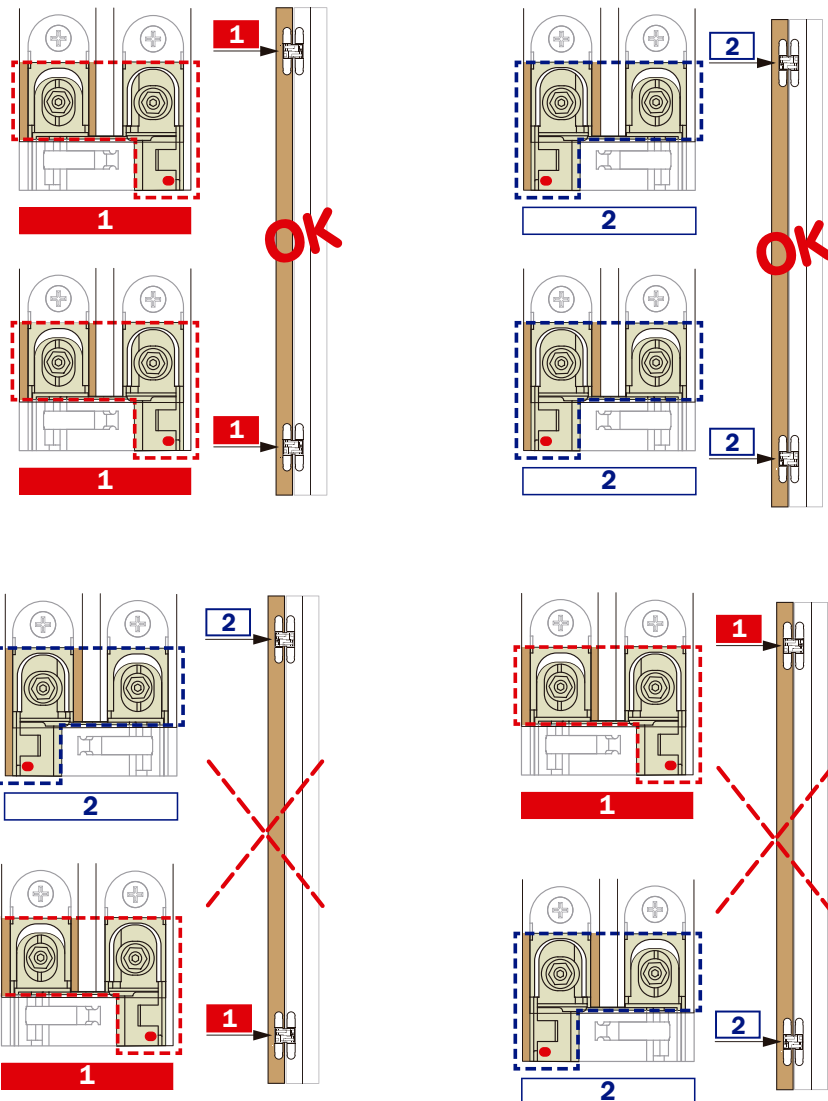
alto: 2.100 mm  
 ancho: 850 mm

- A - 2 bisagras 50 kg
- B - 3 bisagras 70 kg

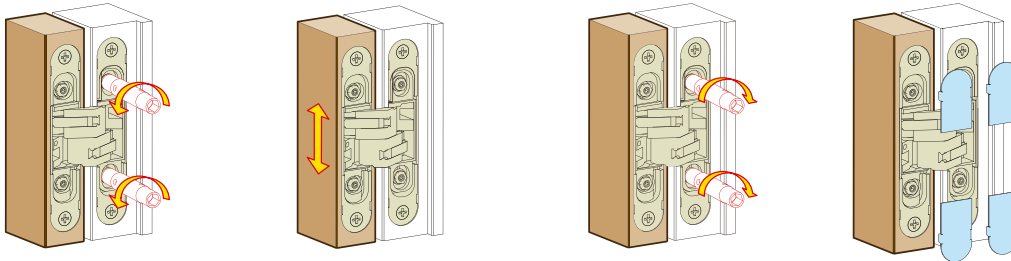
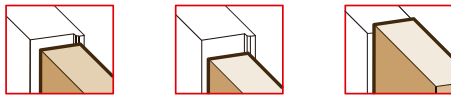
superior a 2.100 mm  
 · C - 4 bisagras 70 kg



Montaje

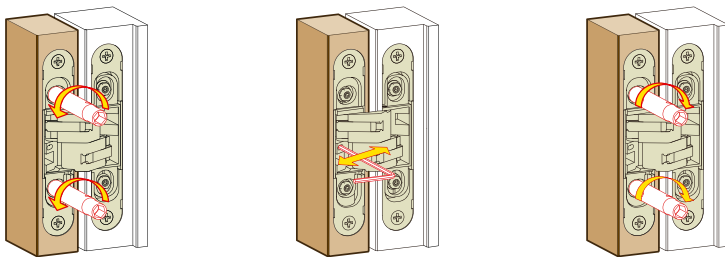
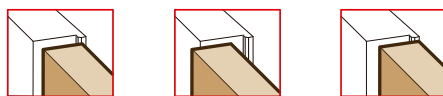


Ajuste vertical



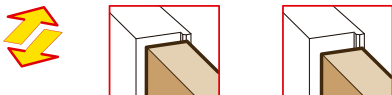
- 3 mm  
+ 3 mm

Ajuste horizontal



- 1 mm  
+ 1 mm

Ajuste de profundidad



- 1.5 mm  
+ 3 mm

